



CAPITAL
Diamond
TOWER

A Step Above The Edge.

About Amazon.



Amazon Holding is a company that was established in the United Arab Emirates (UAE) Since 2000.

We pride ourselves to creating a unique experience with any project we touch base.

Aiming to become one of the most prestigious and innovative Real Estate Developers in the MENA region. We pride ourselves with our 40+ projects; ranging from Administrative, Commercial, Hospitality and Residential.

Associated with various esteemed companies, that have created a solid and prosperous partnership that enabled us to have a versatile and fruitful track record.

Our Esteemed Partners:

- Al-Amazon Building Construction L.L.C.
- Al-Salam Group
- Al-Afif Group
- Force10 Group

Mission

To provide the MENA region markets with state-of-the-art projects that provide the highest ROI and best living standards.

Vision

To become one of the most innovative and accomplished companies in the MENA region.

An aerial view of the Dubai skyline at sunset. The Burj Khalifa is the central focus, towering above other skyscrapers. The sky is a mix of orange, yellow, and blue. In the foreground, there is a complex highway interchange with multiple levels of overpasses and ramps. The buildings are illuminated by the warm light of the setting sun.

FROM UAE TO EGYPT

Came With An Edge.

The First and Tallest
Twist Tower in Africa.

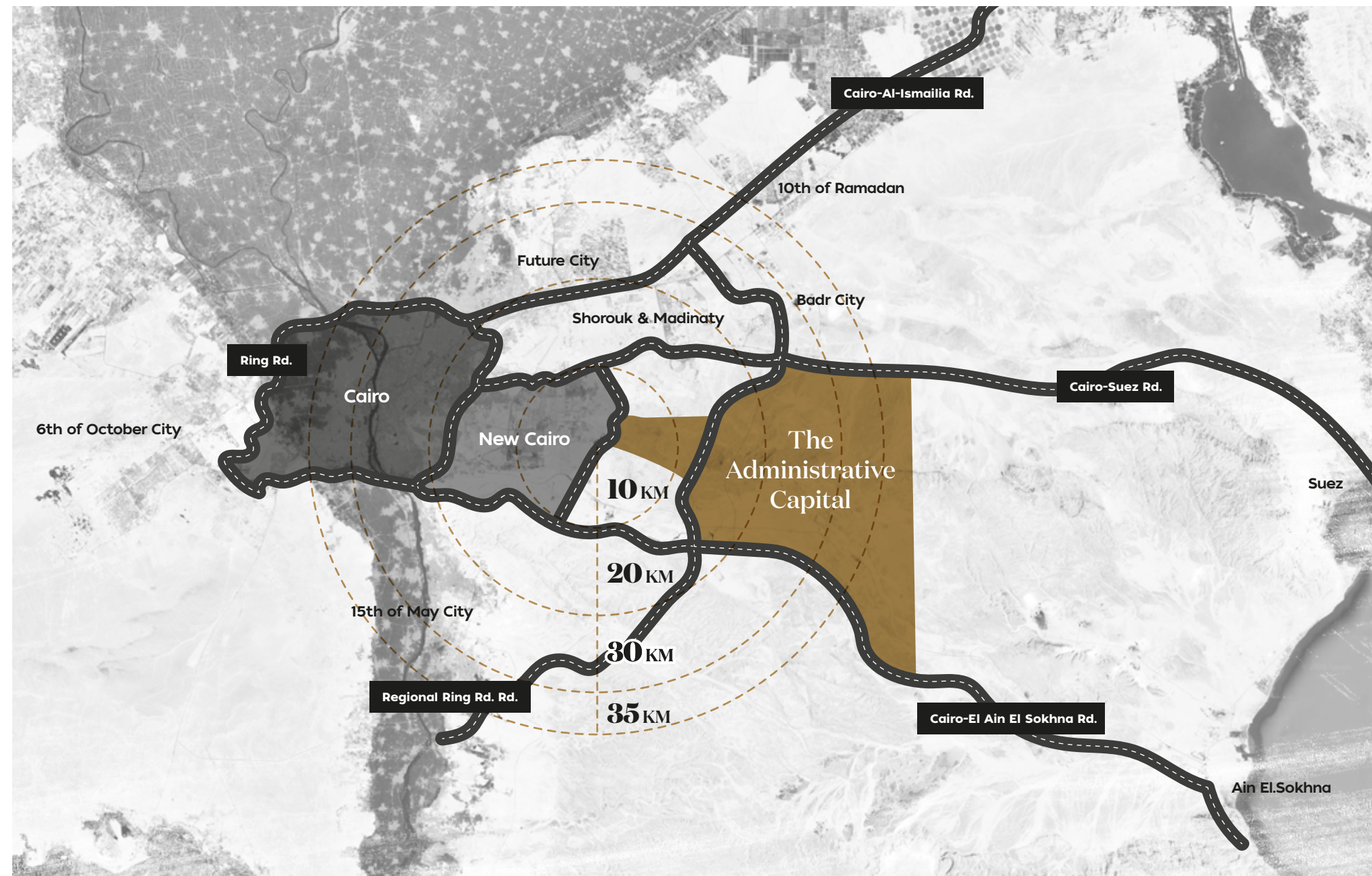




Location.

Diamond Tower is located in the most prominent area of the New Capital that overlooks the Green River Park, which is an arterial garden that represents the natural lung of the new capital, planned to be the most important and largest gathering of central gardens in the whole world. Moreover, Diamond Tower has the view of Sixty Iconic Tower, the tallest tower in Africa that is 400 meters long.





A Prime Location in
A Prime Destination

On the opposite side of the iconic tower in the CBD.



Twist Concept.

Diamond Tower is utilizing a luxurious life style and the latest innovations of corporate spaces through a spiral design that has a grounded base, the outer stainless-steel edges of the tower rotate at 180 degrees from three main points, the top of the tower hosts diverse restaurants that rotate at 360 degrees.

32 Twisting Towers all over the world.


Rank 11 in height.

Rank 6 in rotation (180 degree).

Highest Twisting Tower in Africa.

First Twisting Tower in Egypt.





Three Points
Conducting
Symphony of
Architecture.



DIAMOND IN THE SKY.

Experience the first and highest spiral tower in Africa at the New Administrative Capital, Diamond Tower by Amazon Holding. The diamond tower is a part of chain that was established at Dubai, which makes it an entity that has a passion towards building everlasting landmarks.

We strive on focusing our expertise in planning and strategizing on developing the future, continuously leaving a print of memorable landmarks behind our innovations.



DISCOVER THE NEXT LEVEL.

The rise of the New Administrative Capital is already coming to life and is setting a new forefront for living in Egypt and the Arab region. Everything is moving to the New Administrative Capital, turning it to the new hub of the city. A fully-integrated capital boasting world-class residential, commercial, medical, financial establishments and leading educational institutions, the capital will boast its own independent International Airport, in addition to an electrical trains and main train station connected to Egypt's railway system and it will deploy the latest in advanced technology to provide the first central security system innovative public safety services, ensuring a safe environment like no other.

Facts & Figures.

- The tower consists of 50 floors.
- 204 meters long.
- 3 are for commercial venues and businesses.
- 34 floors for office spaces.
- 5 floors for luxurious hotel apartments.
- 2 floors have revolving restaurants.
- On top of the tower there is the diamond that represents the identity of the tower and the brand behind it.

5
Floors
Hotel
Apartments

3
Floors
Commercial

2
Floors
Diamond
Restaurants

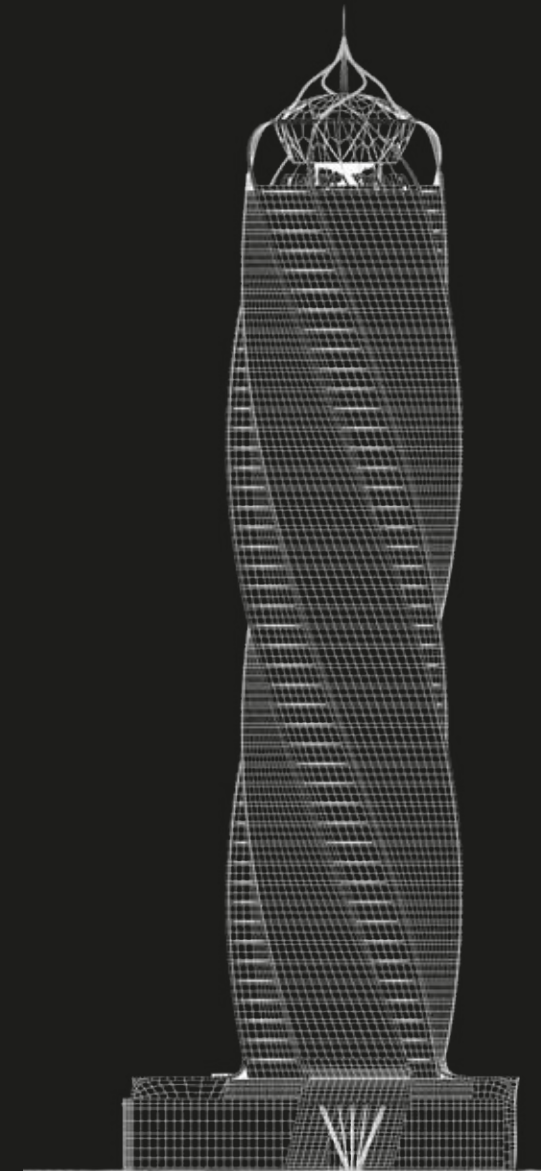
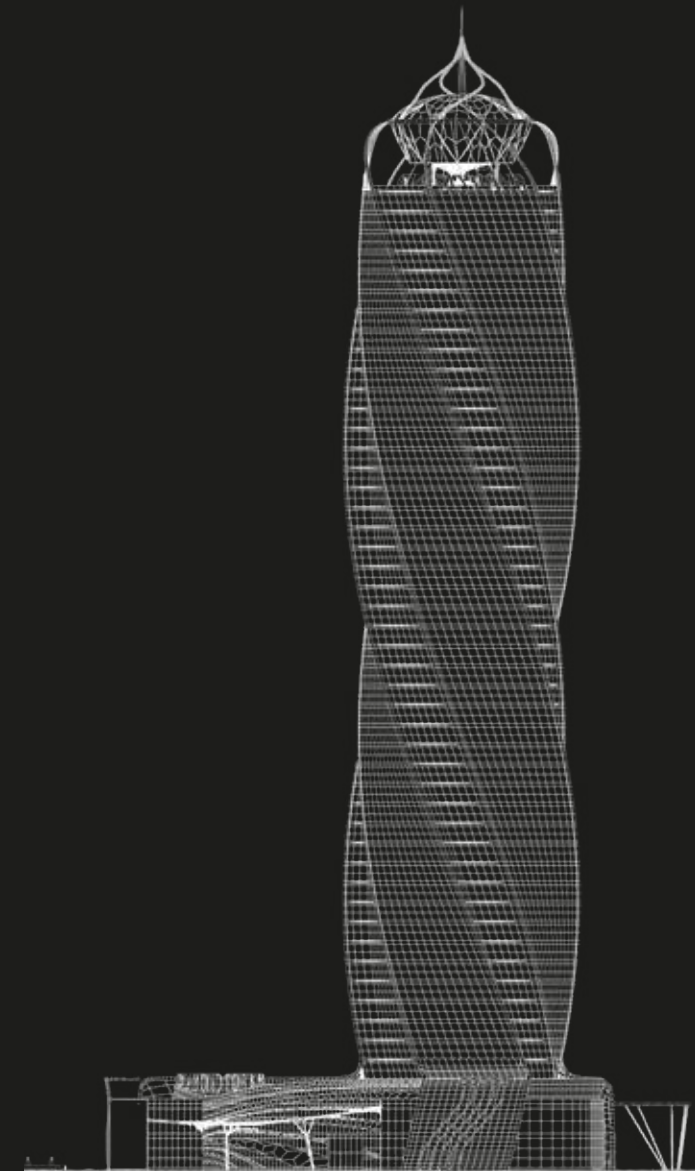
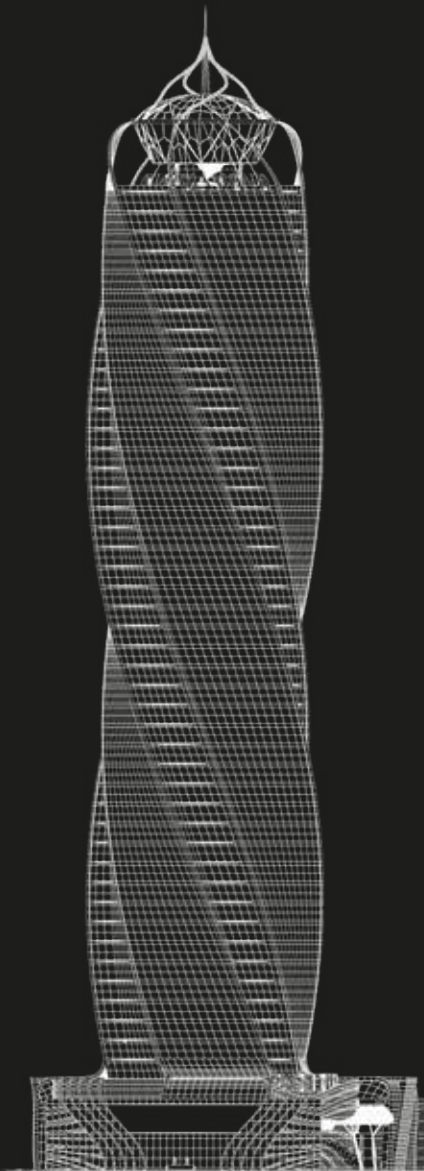
35
Floors
Administrative

45
Floors

Bin Zayed Road Side
Front Elevation

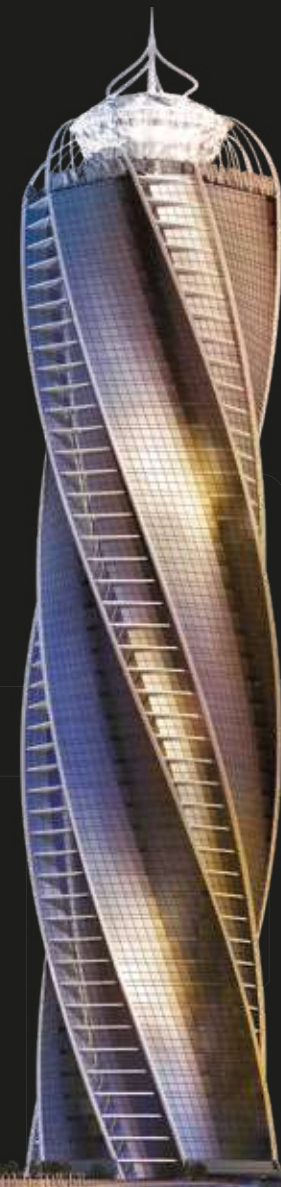
Central Garden Side
Right Elevation

Service Road Side
Back Elevation



Diamond
Tower.

204m



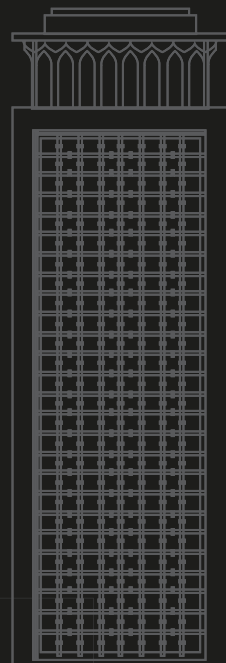
Cairo
Tower

187m



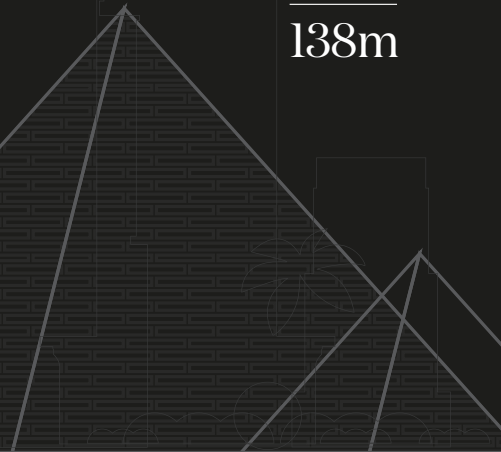
Ministry
of Foreign
Affairs

143m



Giza
Pyramid

138m







Upgrade your Life Style.

Diamond Tower completes the image of a luxurious life style that has its own standards, providing a variety of amenities that riches the whole experience.

Facilities & Sevices.

Office Spaces equipped to take businesses to the next level.



Revolving restaurants with the perfect view of the new administrative capital



Shopping areas that offer the ultimate shopping experience.



10 high speed elevators for a smooth flow.



Facilities
& Services.

VIP Lounge.



Luxurious hotel serviced apartments.



5 Floor underground parking.



Health club and gyms for self-wellness.



Emergency Clinic.



Swimming Pool.

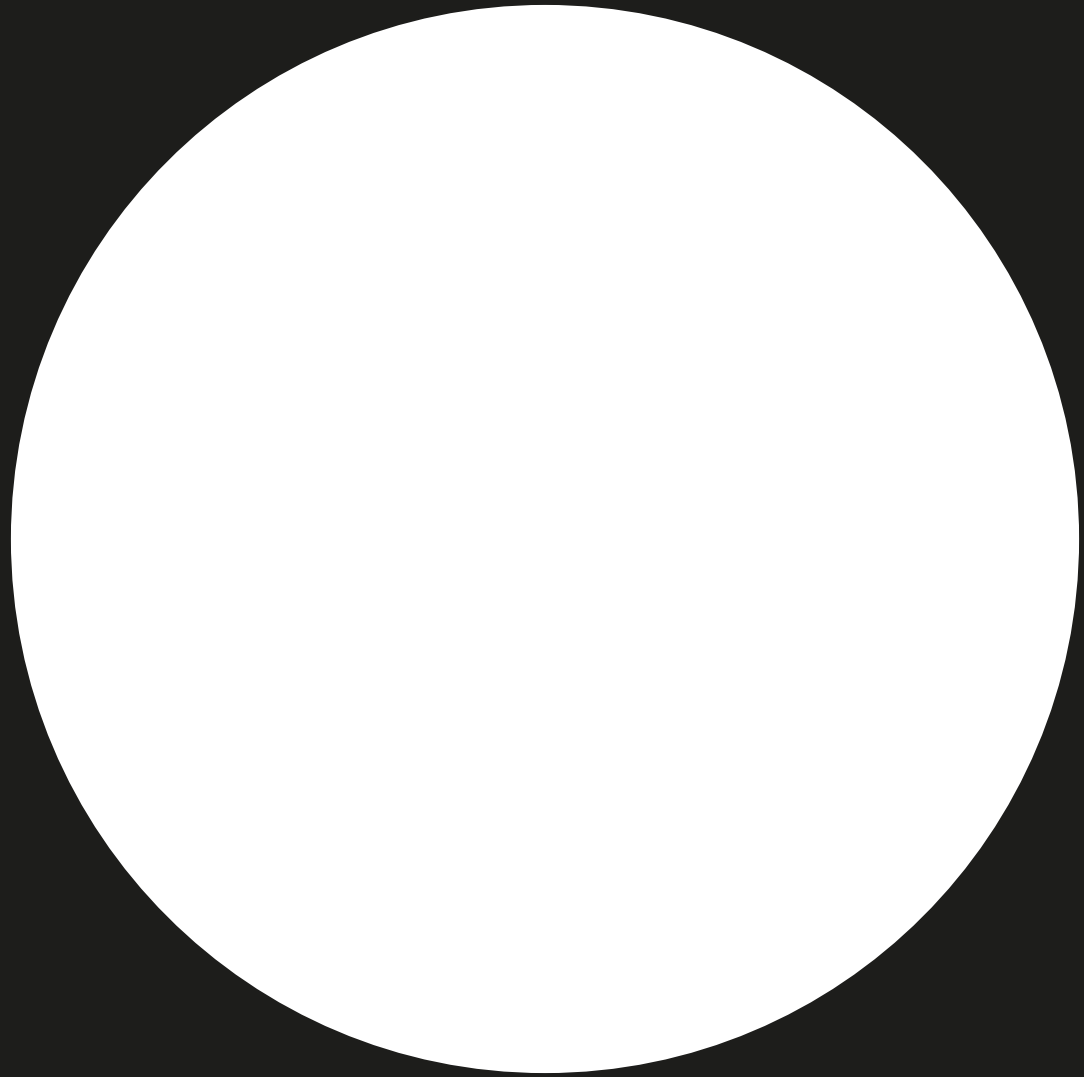


Other Facilities & Services:

- Special needs friendly.
- Garbage room in each floor.
- Standby generators.
- High speed fiber optics connection.
- 24/7 cameras for high security.

Floor Plans

Disclaimer: The sales and purchase agreement constitutes all the rights and obligations agreed between the seller and the buyer, the content of this document is hereby considered as "a non-obligatory guiding draft".





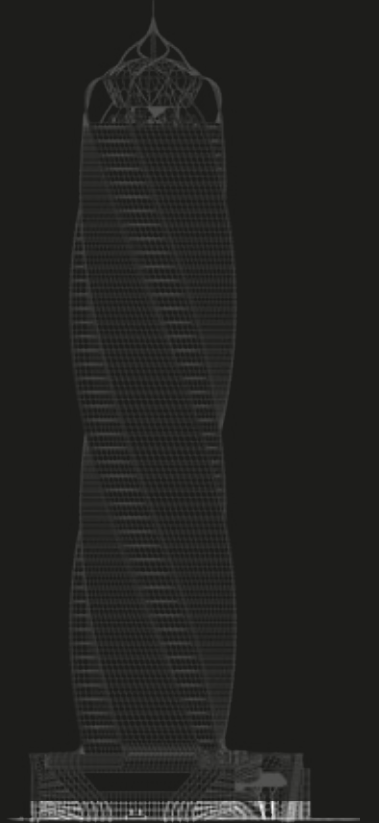
Commercial



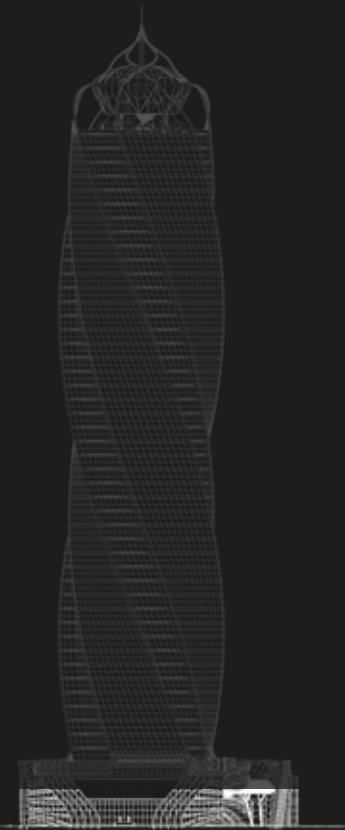


G Floor

Commercial Area



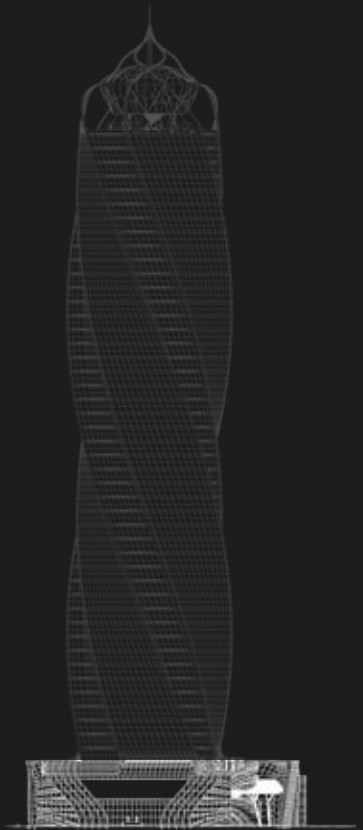
1st
Floor
Commercial Area





2nd Floor

Commercial Area

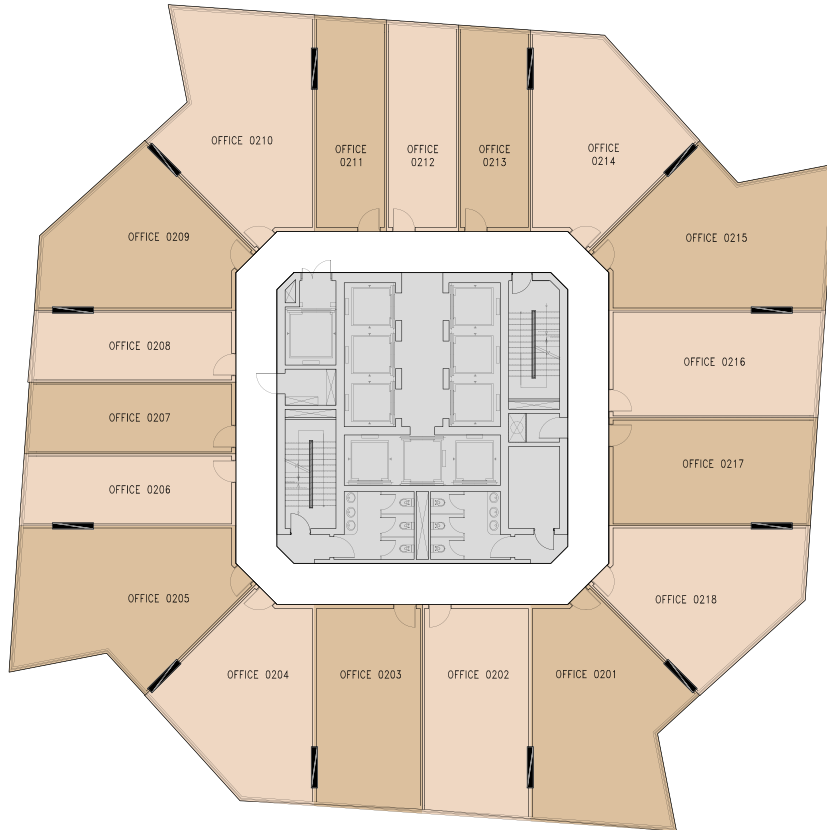


Administrative

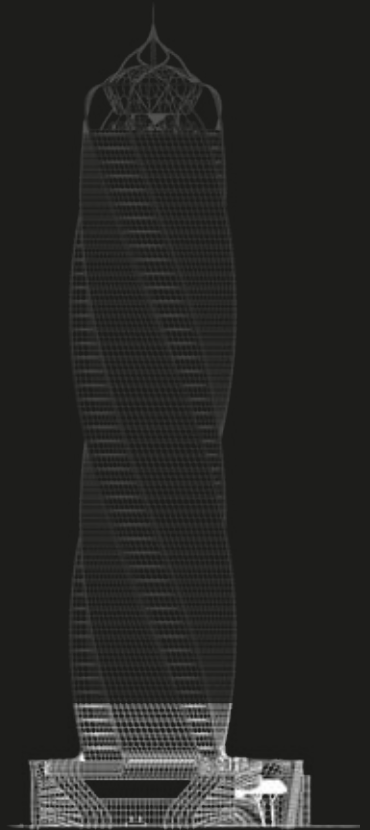
An aerial, high-angle photograph of a modern skyscraper at night. The building's facade is a dense grid of windows, many of which are illuminated from within, creating a warm glow. The building's structure is characterized by a series of sharp, angular protrusions and recessions that create a complex, geometric pattern. The lighting is dramatic, with strong highlights and deep shadows, emphasizing the building's verticality and architectural details. The surrounding area is dark, with some faint lights visible in the distance.

Level 02

Administrative Floor

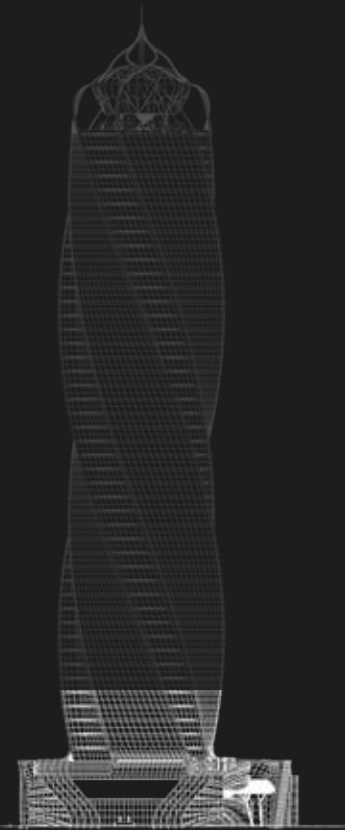


Office No.	GROSS AREA (m2)
201	106.22
202	81.33
203	78.57
204	87.63
205	106.17
206	52.04
207	50.81
208	49.59
209	83.54
210	101.27
211	50.95
212	49.75
213	48.55
214	83.54
215	102.63
216	78.62
217	78.57
218	87.63
Total	1377.41

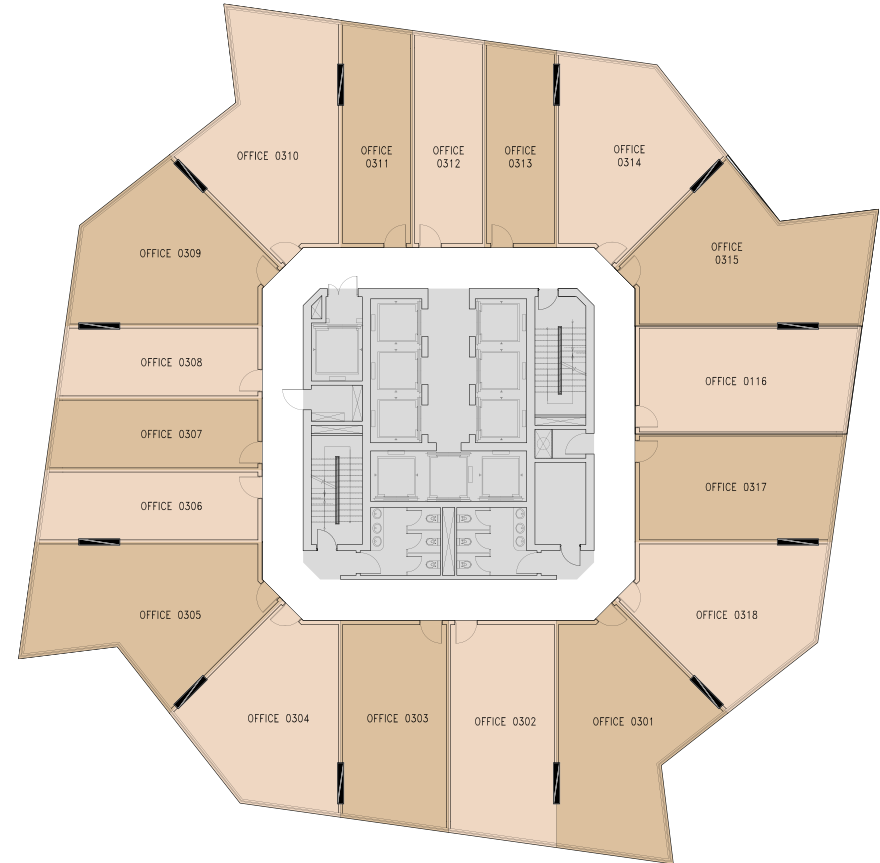


Level 03

Administrative Floor

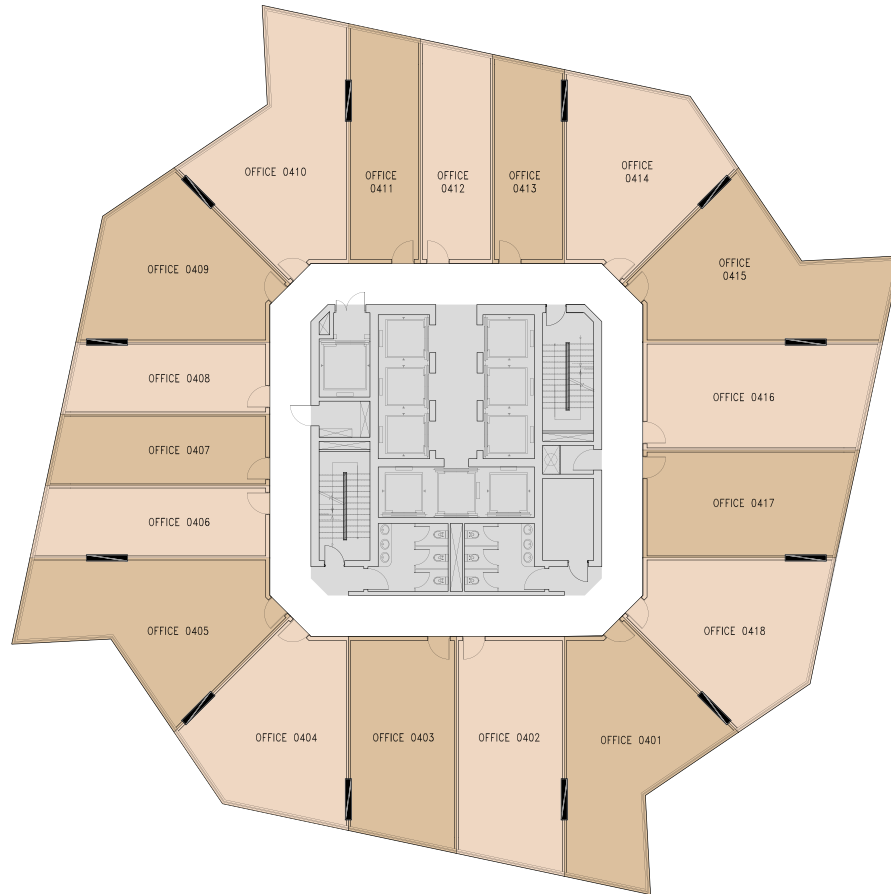


Office No.	GROSS AREA (m2)
301	103.37
302	83.97
303	78.16
304	88.3
305	103.27
306	53.98
307	51.52
308	49.06
309	84.18
310	98.55
311	52.85
312	50.44
313	48.03
314	84.18
315	99.92
316	81.17
317	78.16
318	88.3
Total	1377.41

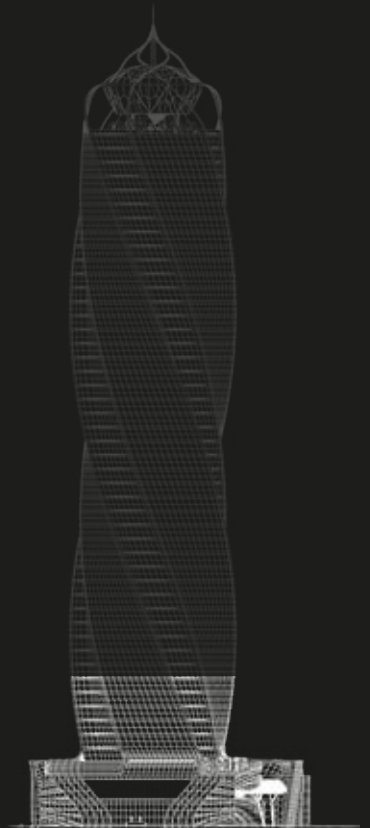


Level 04

Administrative Floor

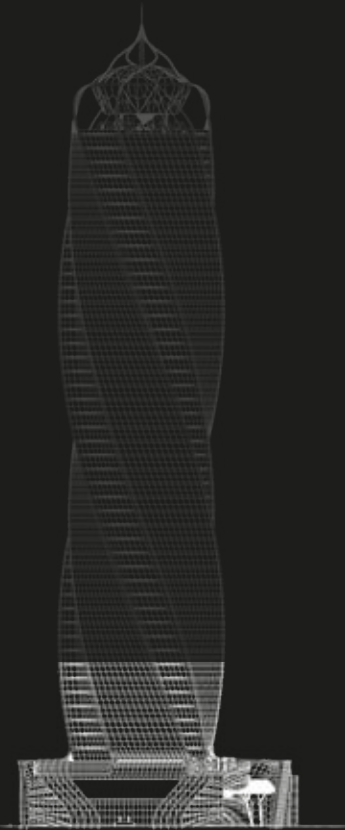


Office No.	GROSS AREA (m2)
401	99.63
402	87.35
403	78.56
404	88.29
405	99.6
406	56.55
407	52.72
408	49
409	84.27
410	94.95
411	55.26
412	51.62
413	47.97
414	84.17
415	96.18
416	84.44
417	78.56
418	88.29
Total	1377.41

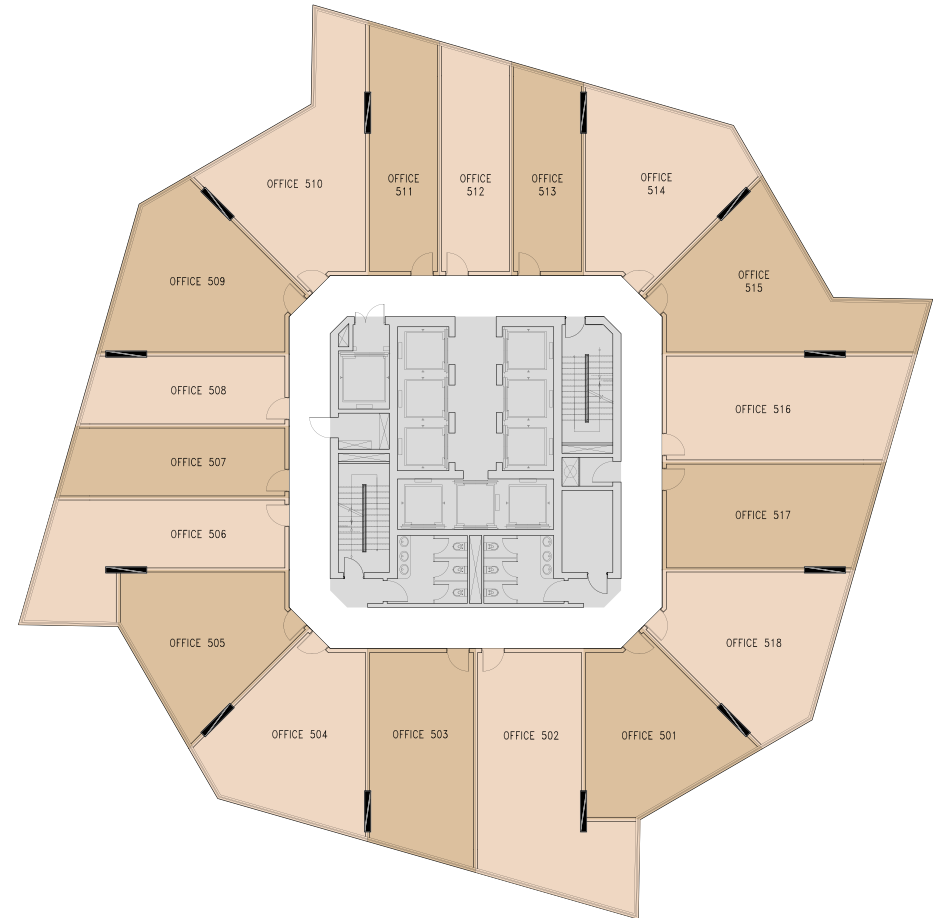


Level 05

Administrative Floor

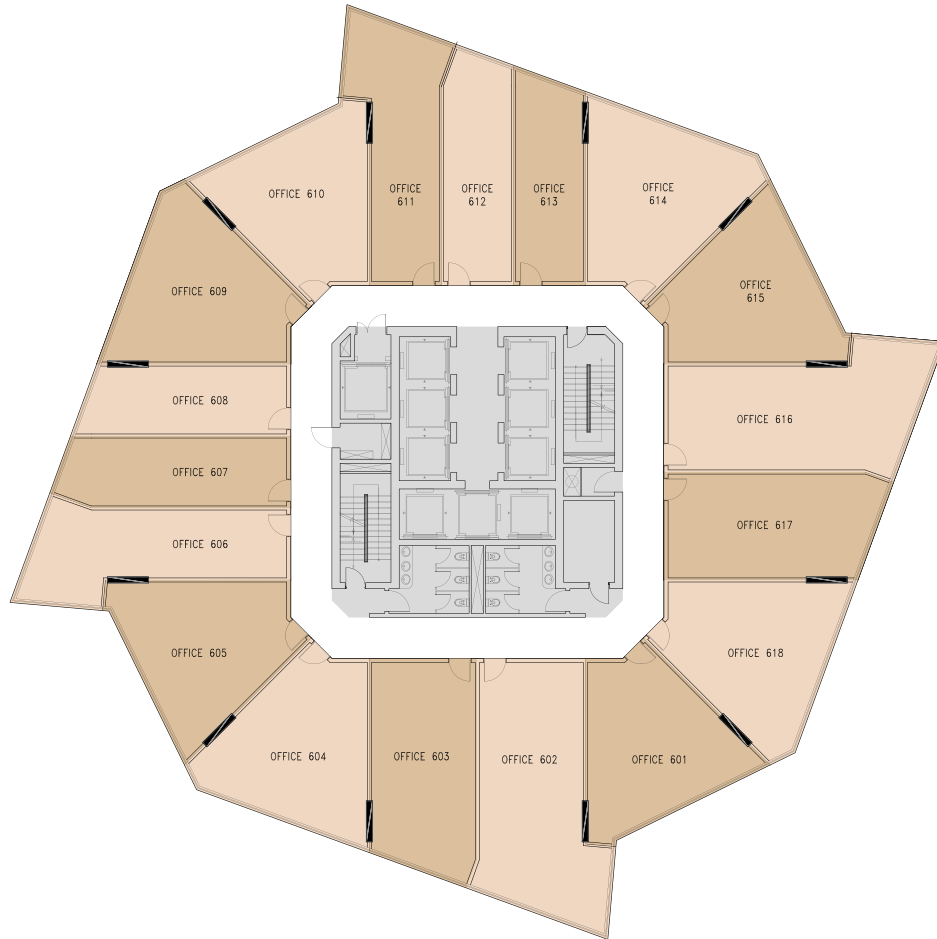


Office No.	GROSS AREA (m2)
501	76.8
502	109.79
503	79.74
504	87.67
505	76.85
506	76.86
507	54.55
508	49.52
509	83.58
510	90.47
511	58.32
512	53.4
513	48.49
514	83.58
515	91.73
516	88.65
517	79.74
518	87.67
Total	1377.41

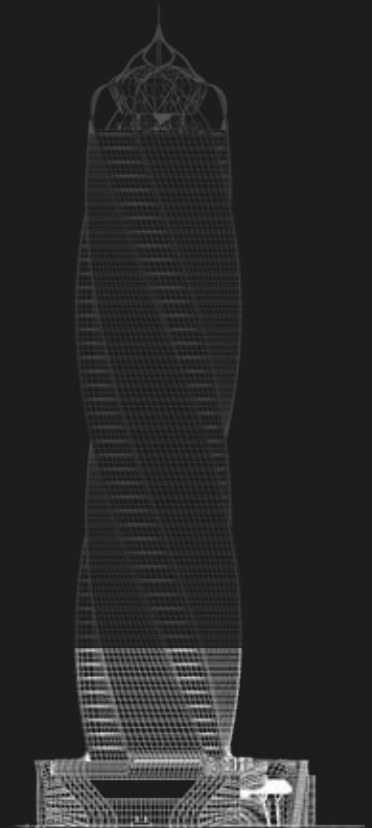


Level 06

Administrative Floor

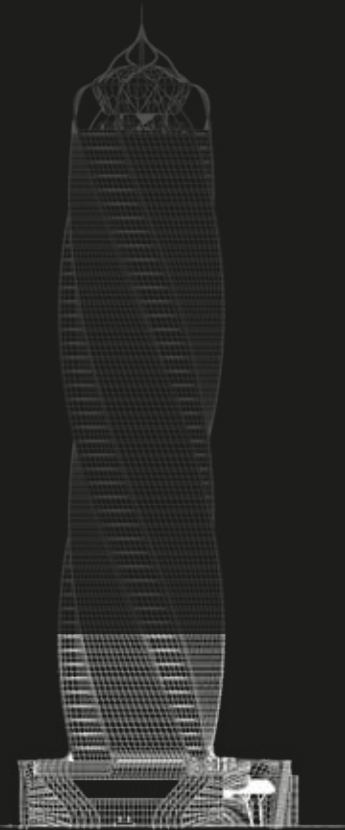


Office No.	GROSS AREA (m2)
601	80.65
602	105.99
603	81.27
604	86.11
605	80.65
606	72.51
607	55.65
608	50.46
609	82.18
610	76.99
611	70.99
612	54.48
613	49.31
614	82.18
615	77.96
616	102.56
617	81.27
618	86.2
Total	1377.41

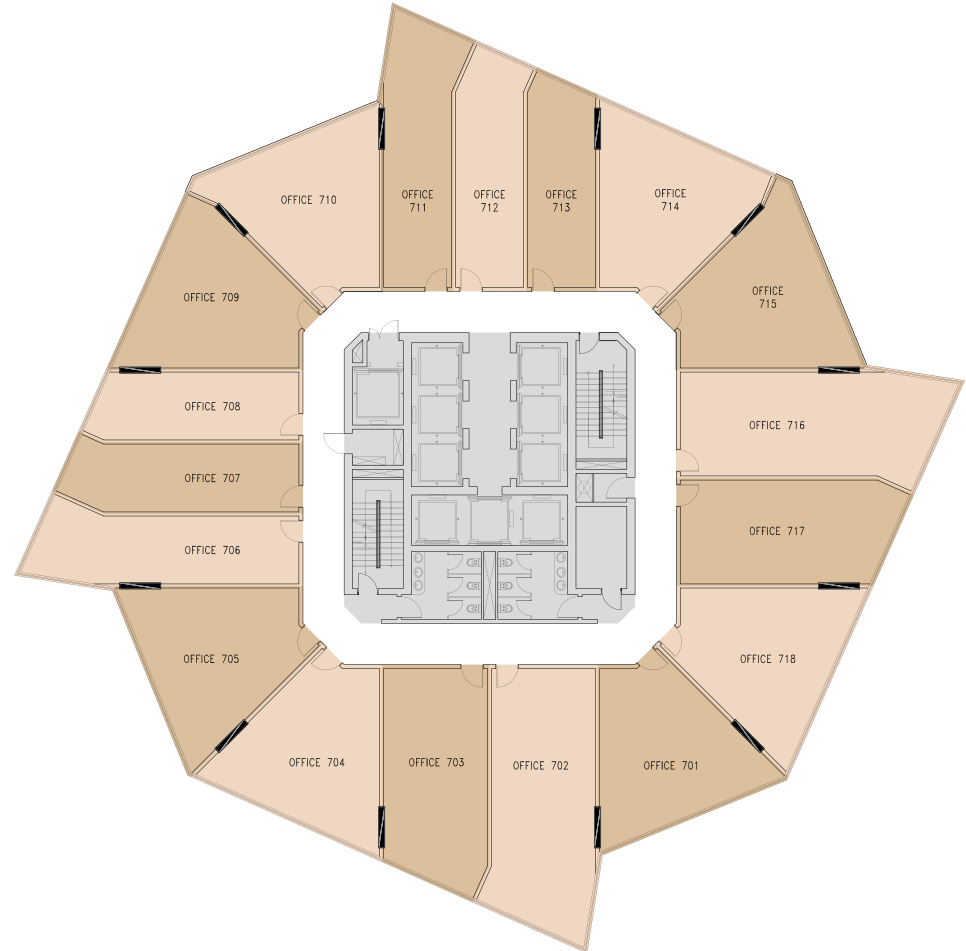


Level 07

Administrative Floor

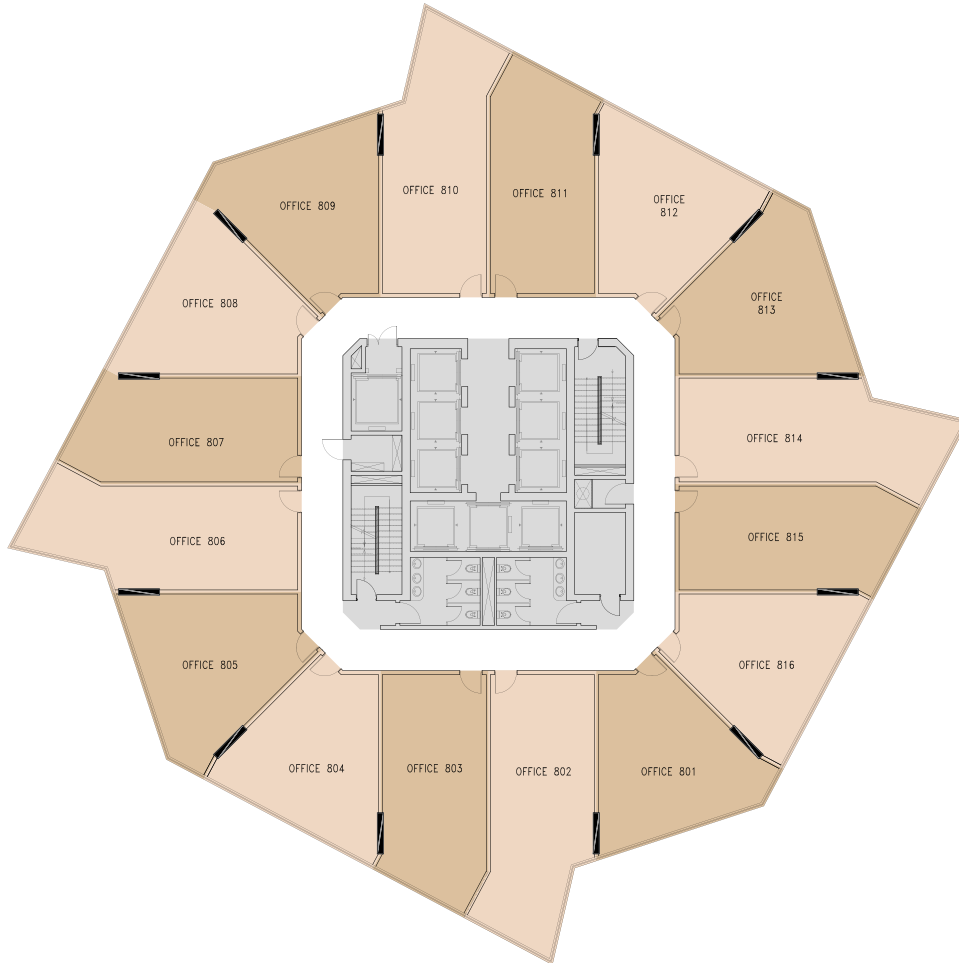


Office No.	GROSS AREA (m2)
701	84.05
702	103.44
703	83.49
704	83.12
705	84.05
706	68.99
707	57.92
708	51.41
709	79.25
710	80.13
711	67.51
712	56.71
713	50.33
714	79.25
715	81.25
716	99.9
717	83.49
718	83.12
Total	1377.41

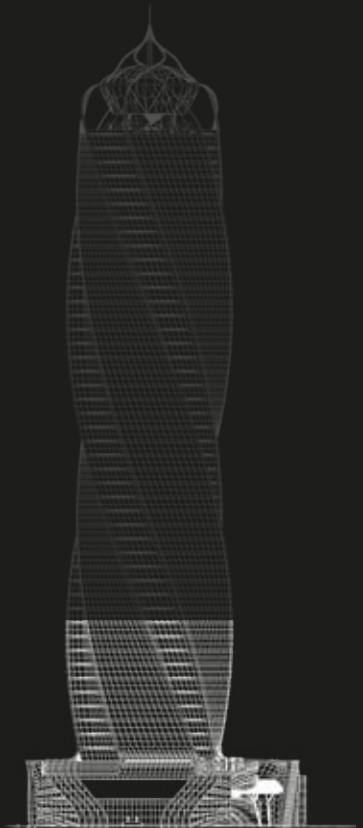


Level 08

Administrative Floor

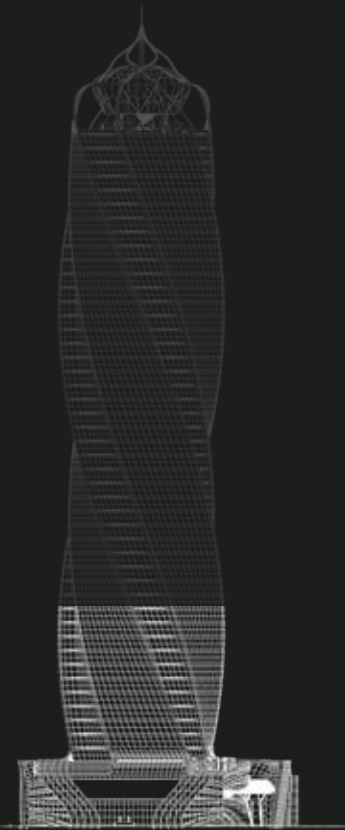


Office No.	GROSS AREA (m2)
801	86.09
802	99.93
803	86.43
804	81.66
805	86.09
806	95.36
807	82.45
808	77.85
809	82.08
810	93.37
811	80.62
812	77.85
813	83.22
814	96.52
815	86.33
816	81.56
Total	1377.41

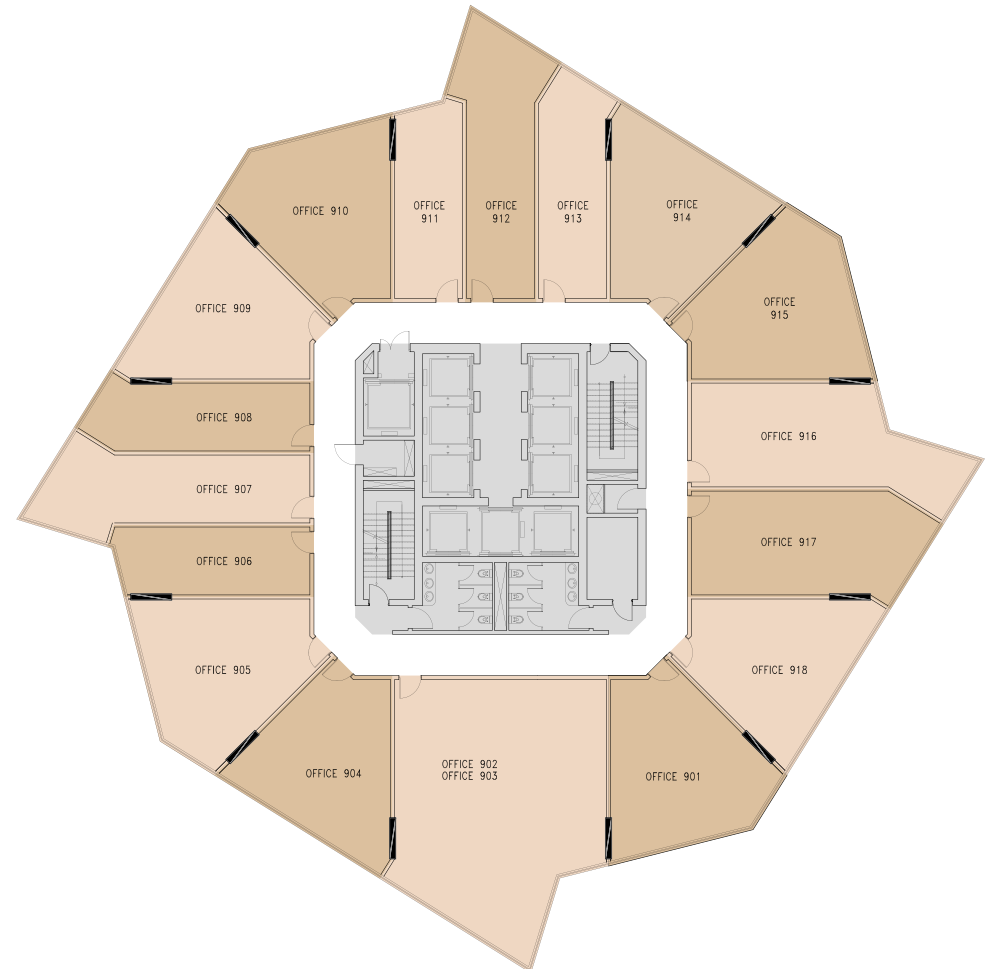


Level 09

Administrative Floor

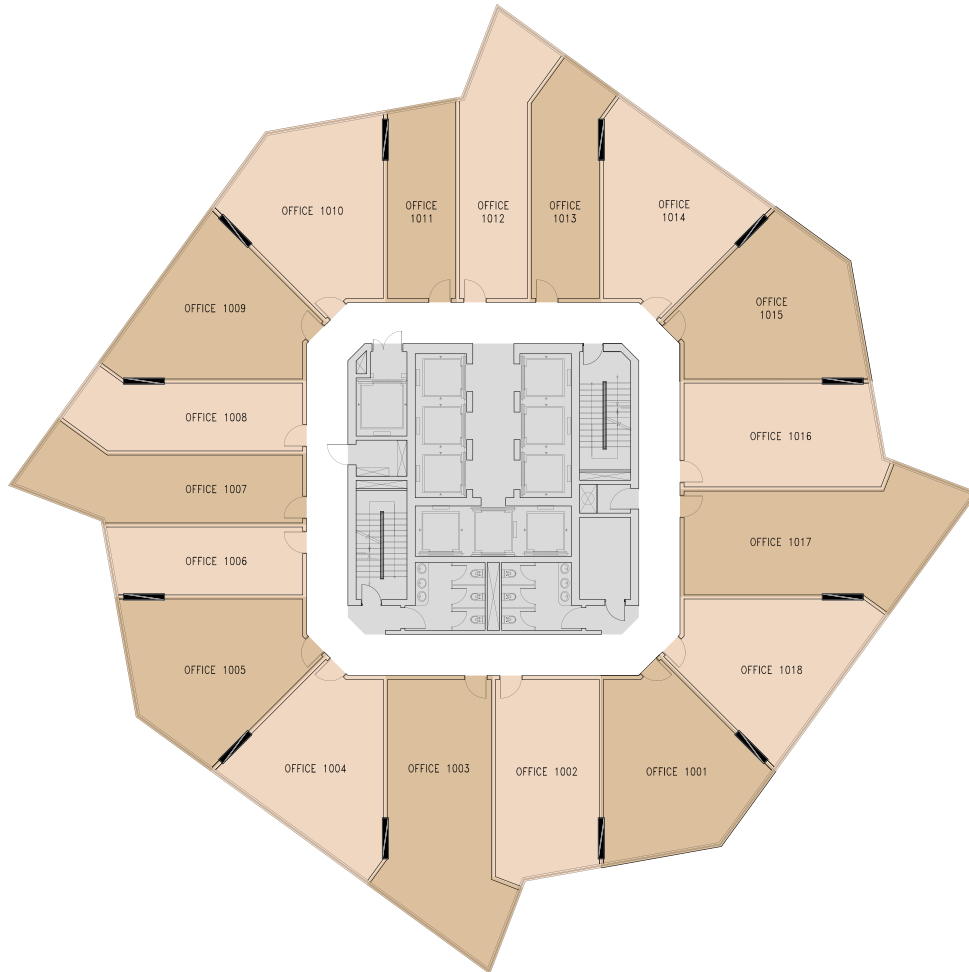


Office No.	GROSS AREA (m2)
901	87.37
902	184.94
903	
904	81.59
905	87.37
906	48.49
907	72.92
908	54.99
909	77.79
910	83.32
911	47.48
912	71.49
913	53.93
914	77.79
915	84.47
916	92.29
917	89.69
918	81.49
Total	1377.41

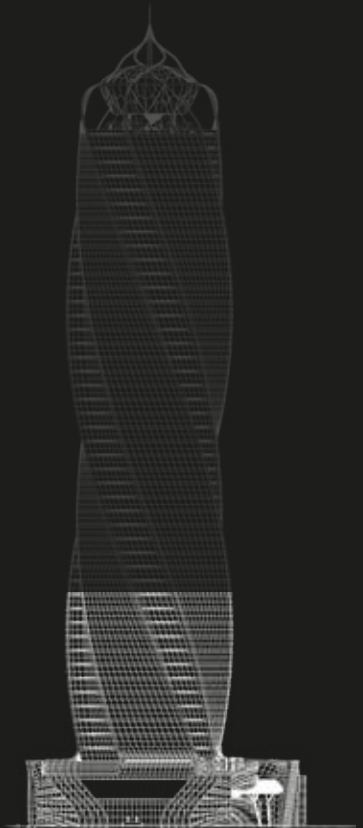


Level 10

Administrative Floor

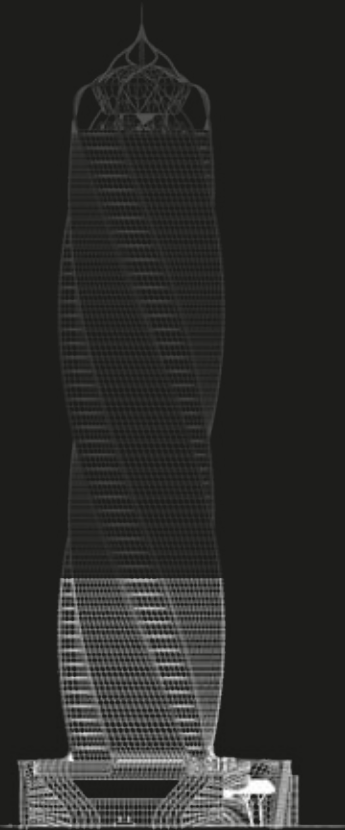


Office No.	GROSS AREA (m2)
1001	88.17
1002	77.07
1003	106.16
1004	82.49
1005	88.27
1006	48.32
1007	69.09
1008	57.17
1009	78.55
1010	84.16
1011	47.31
1012	67.64
1013	55.97
1014	78.55
1015	85.33
1016	74.6
1017	106.16
1018	82.4
Total	1377.41

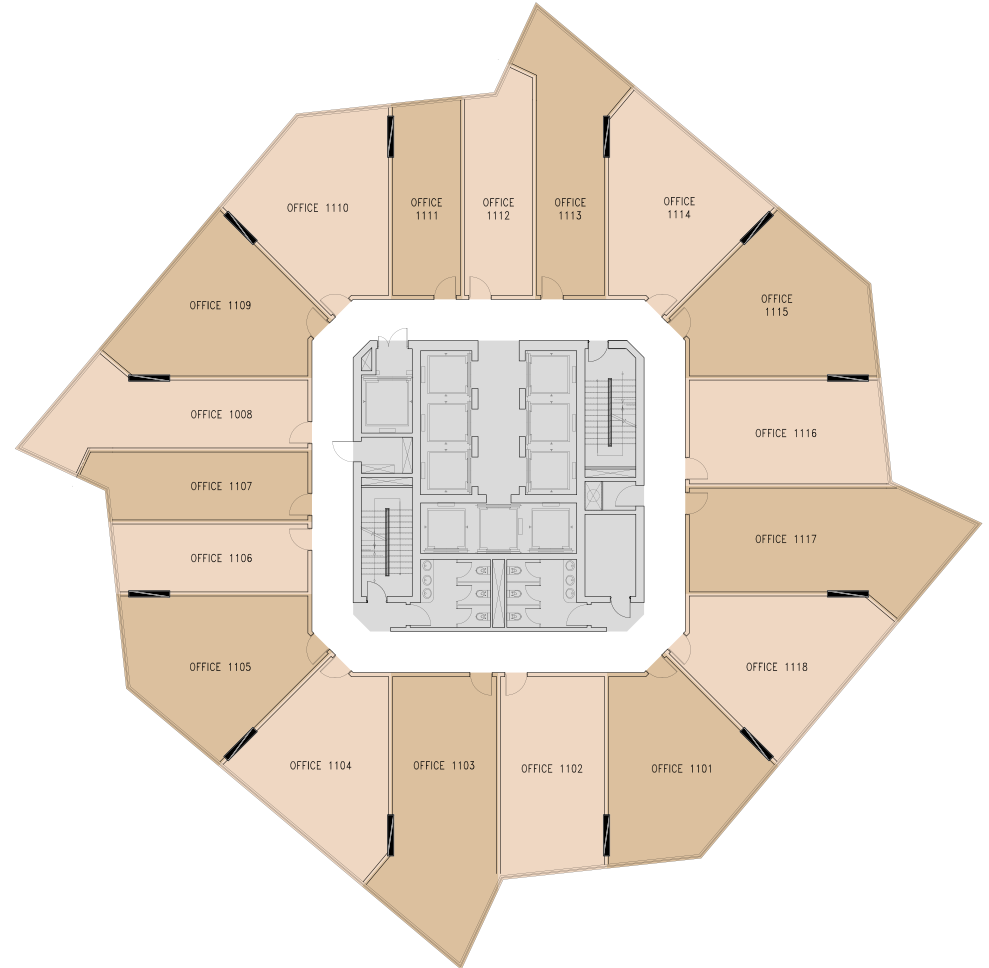


Level II

Administrative Floor

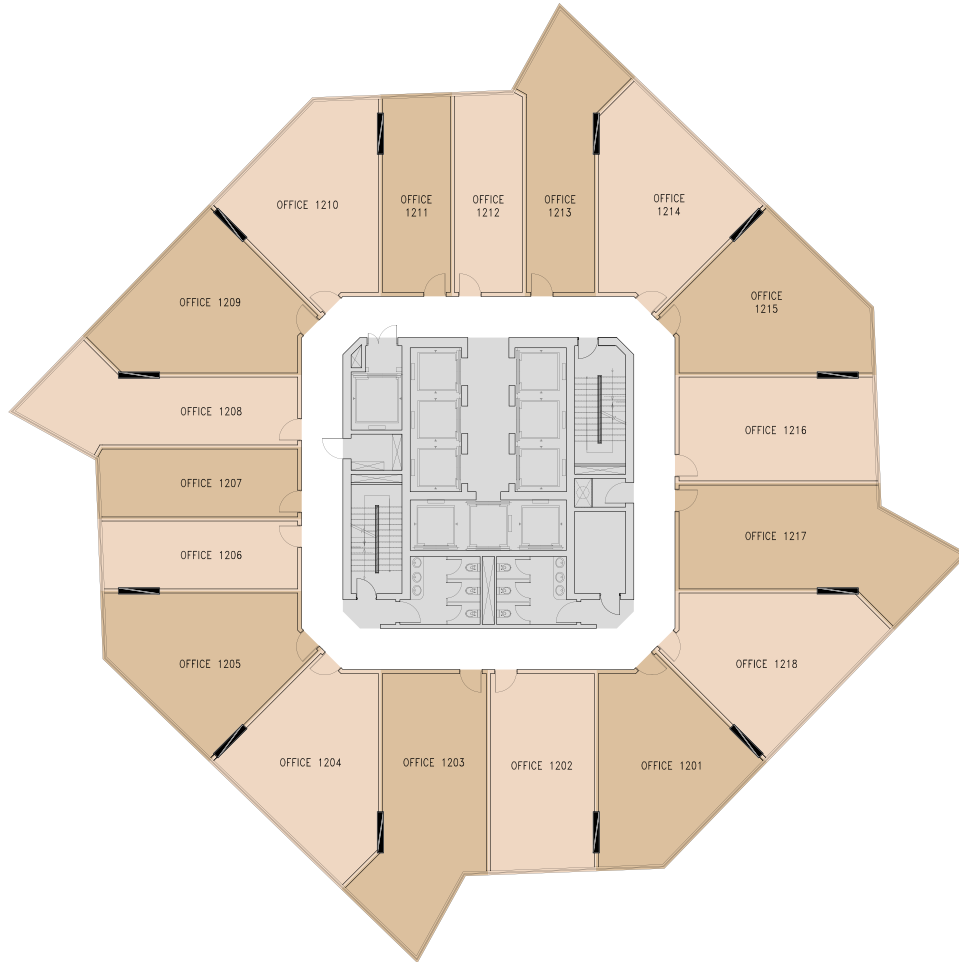


Office No.	GROSS AREA (m2)
1101	88.37
1102	77.41
1103	103.94
1104	84.11
1105	88.47
1106	48.61
1107	52.99
1108	71.28
1109	80.27
1110	84.34
1111	47.59
1112	51.78
1113	69.79
1114	80.27
1115	85.42
1116	74.73
1117	103.94
1118	84.1
Total	1377.41

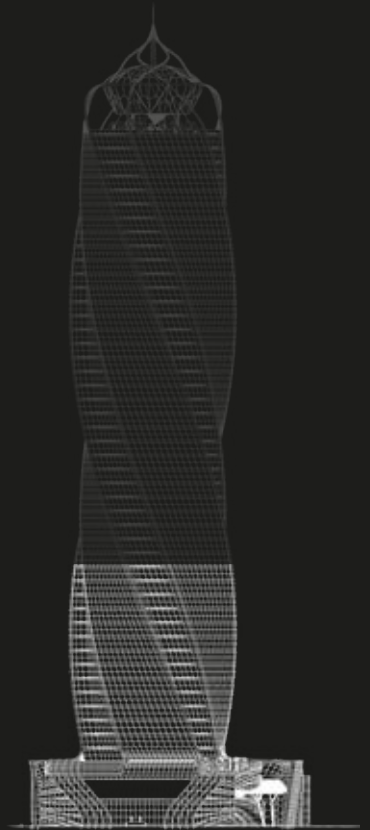


Level 12

Administrative Floor

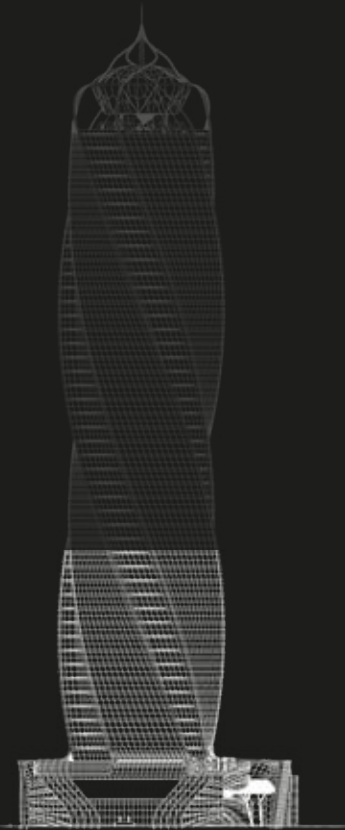


Office No.	GROSS AREA (m2)
1201	87.88
1202	77.94
1203	100.92
1204	87.18
1205	87.98
1206	49.46
1207	49.91
1208	71.13
1209	83.12
1210	83.88
1211	48.32
1212	48.86
1213	69.64
1214	83.02
1215	84.95
1216	75.32
1217	100.82
1218	87.08
Total	1377.41

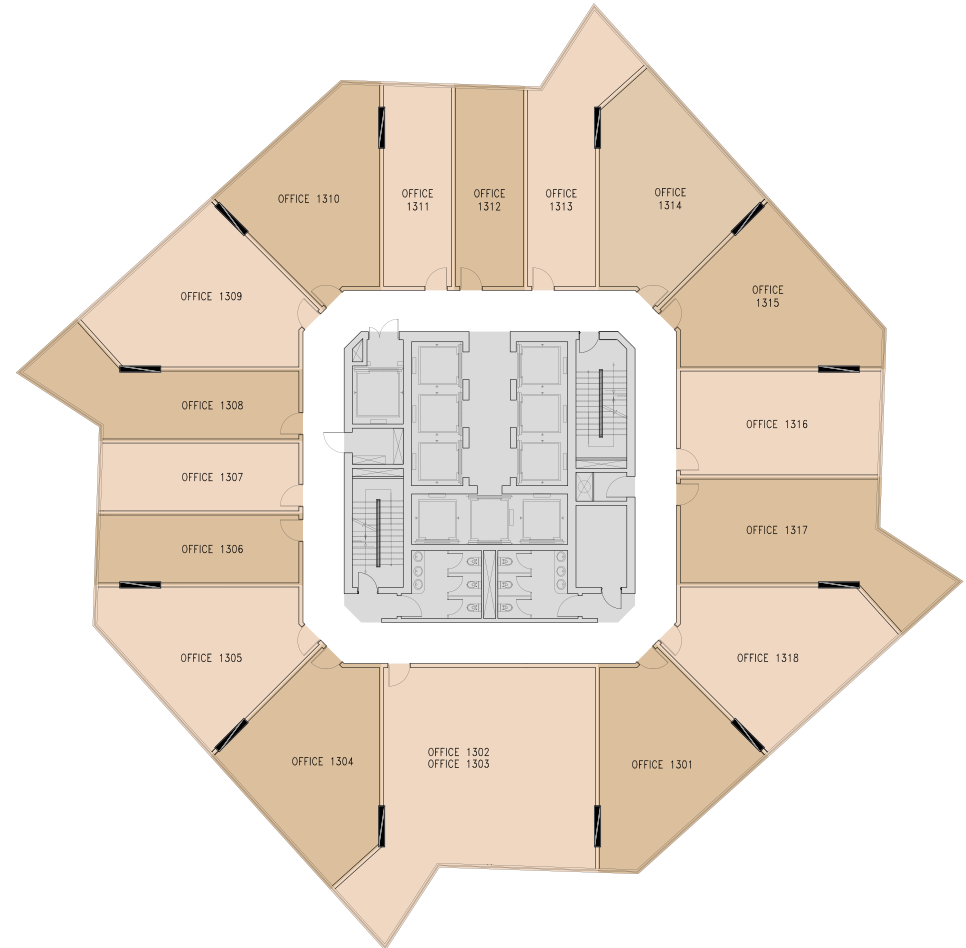


Level 13

Administrative Floor

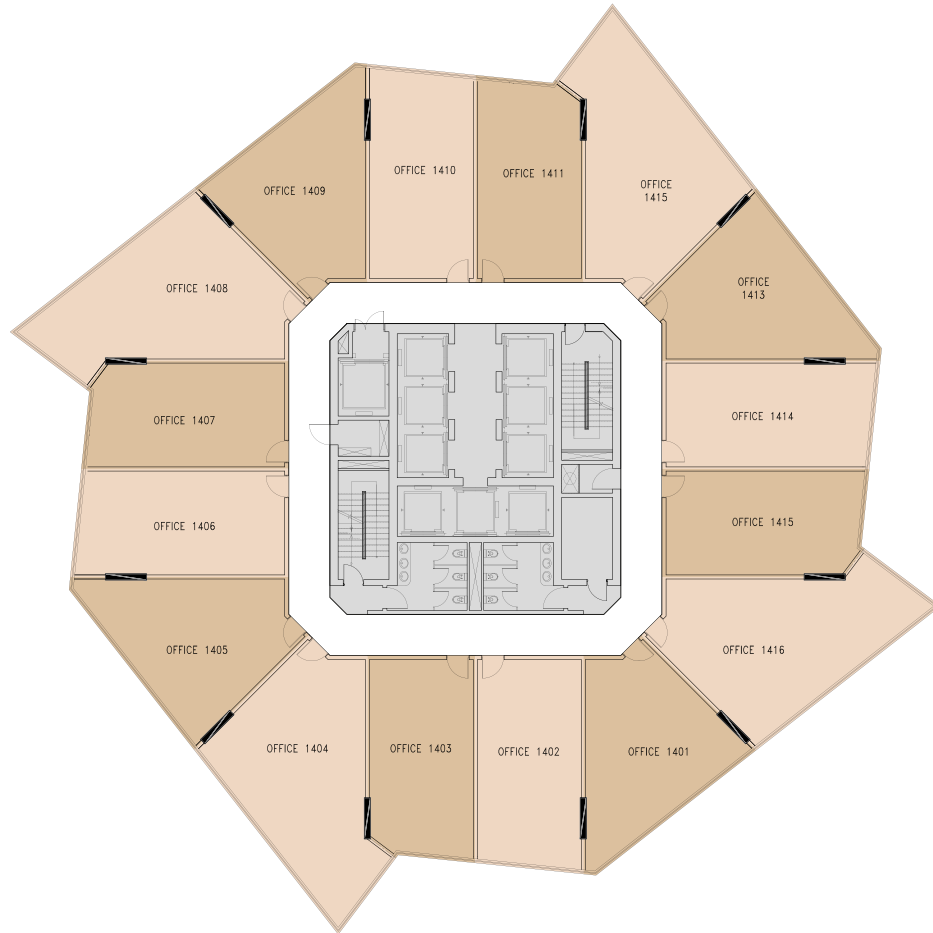


Office No.	GROSS AREA (m2)
1301	86.82
1302	175.93
1303	
1304	91.16
1305	86.82
1306	50.57
1307	49.99
1308	67.05
1309	86.91
1310	82.78
1311	49.52
1312	48.94
1313	65.65
1314	86.91
1315	83.93
1316	76.69
1317	96.58
1318	91.16
Total	1377.41

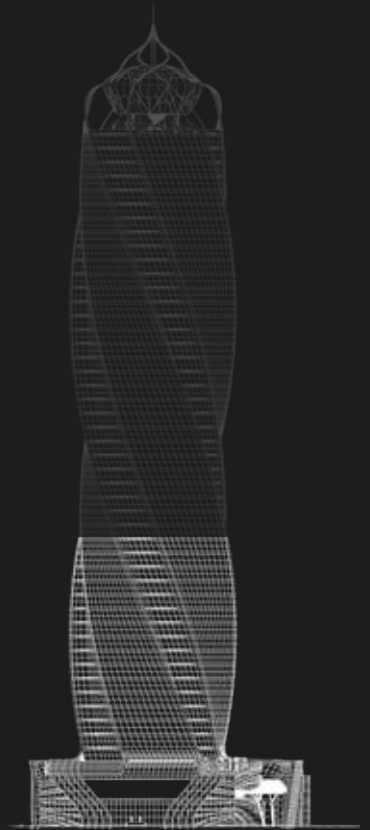


Level 14

Administrative Floor

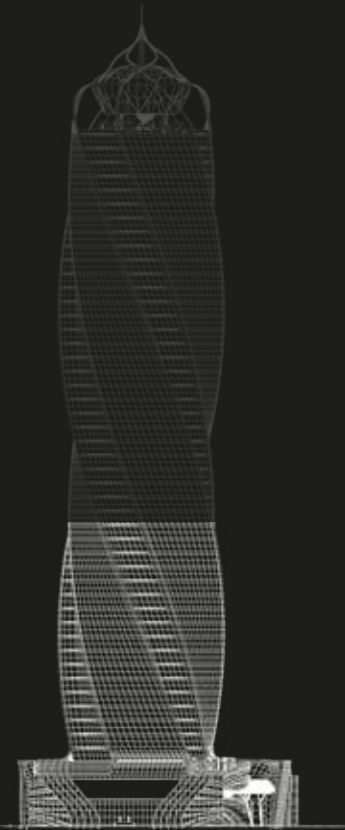


Office No.	GROSS AREA (m2)
1401	84.82
1402	81.65
1403	76.71
1404	110.77
1405	84.98
1406	77.69
1407	73.09
1408	105.5
1409	80.92
1410	76.07
1411	71.55
1412	105.5
1413	82.05
1414	78.78
1415	76.66
1416	110.67
Total	1377.41

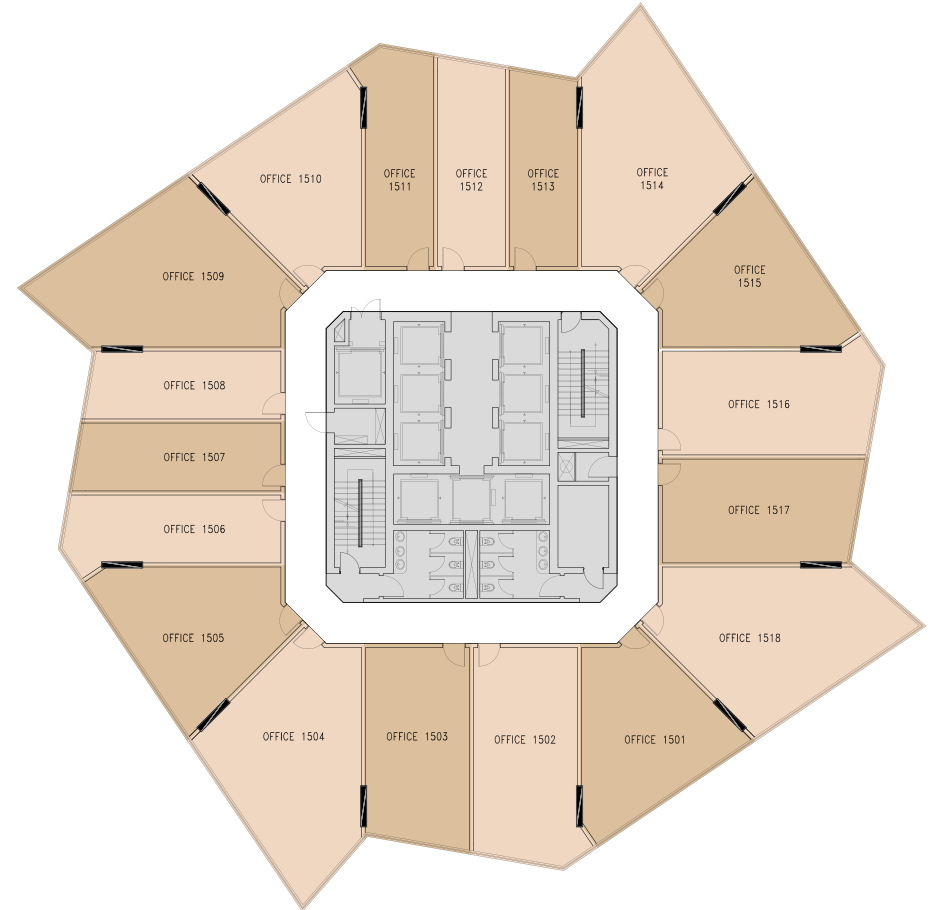


Level 15

Administrative Floor

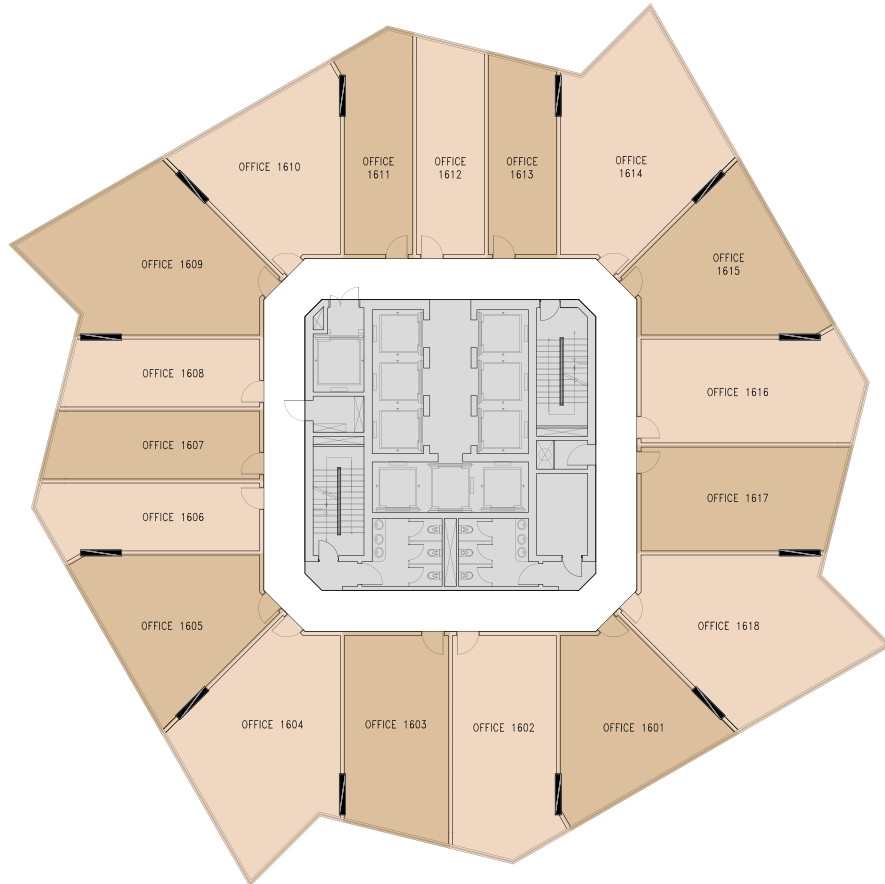


Office No.	GROSS AREA (m2)
1501	81.63
1502	85.32
1503	77.38
1504	109.68
1505	81.63
1506	55.17
1507	51.48
1508	48.36
1509	104.66
1510	77.73
1511	54.01
1512	50.3
1513	47.35
1514	104.56
1515	78.81
1516	82.38
1517	77.28
1518	109.68
Total	1377.41

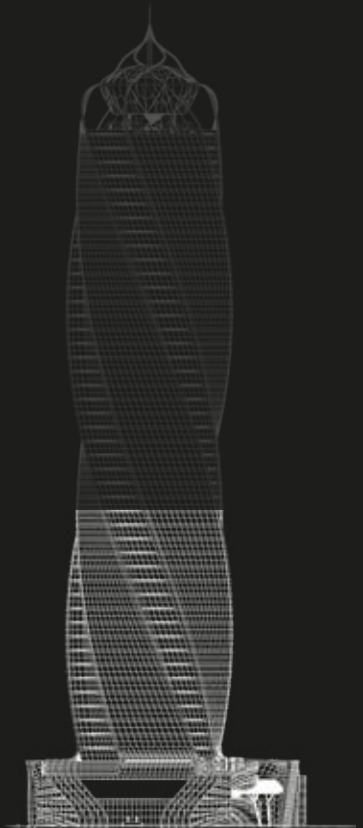


Level 16

Administrative Floor

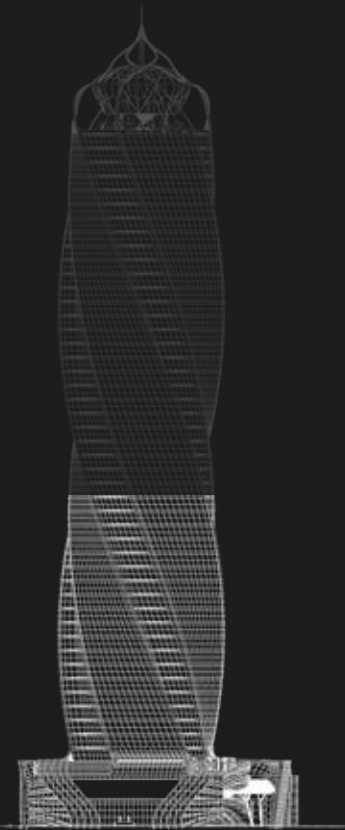


Office No.	GROSS AREA (m2)
1601	81.37
1602	85.98
1603	77.99
1604	108.53
1605	81.34
1606	54.9
1607	52.81
1608	48.48
1609	103.56
1610	77.54
1611	53.75
1612	51.7
1613	47.46
1614	103.66
1615	78.73
1616	82.99
1617	77.99
1618	108.63
Total	1377.41

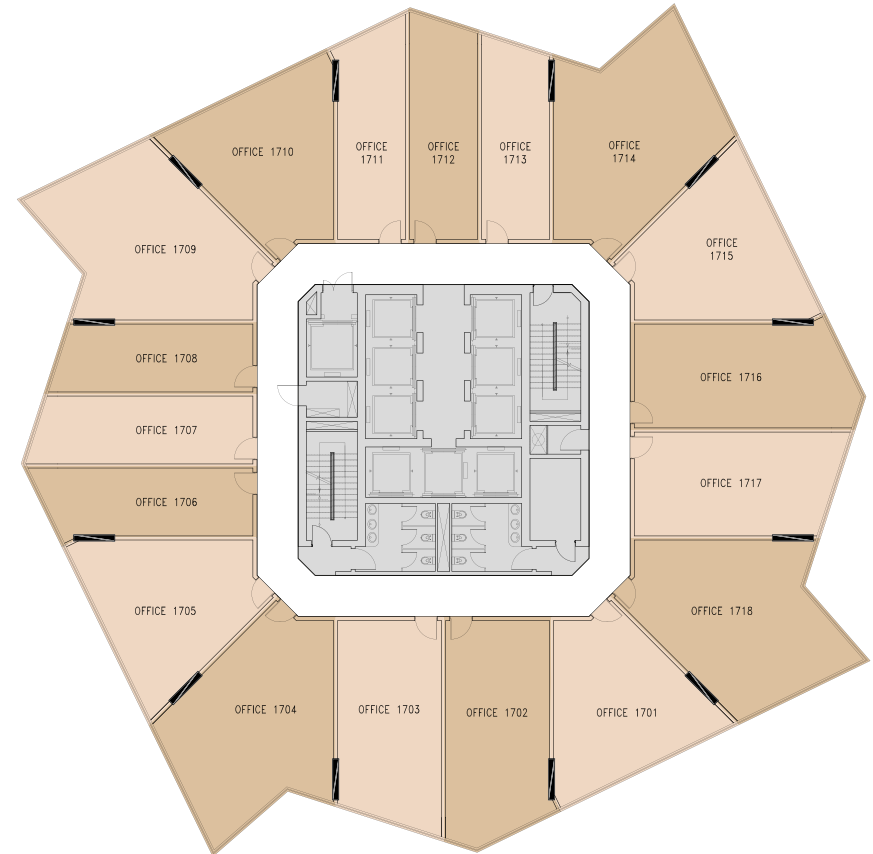


Level 17

Administrative Floor

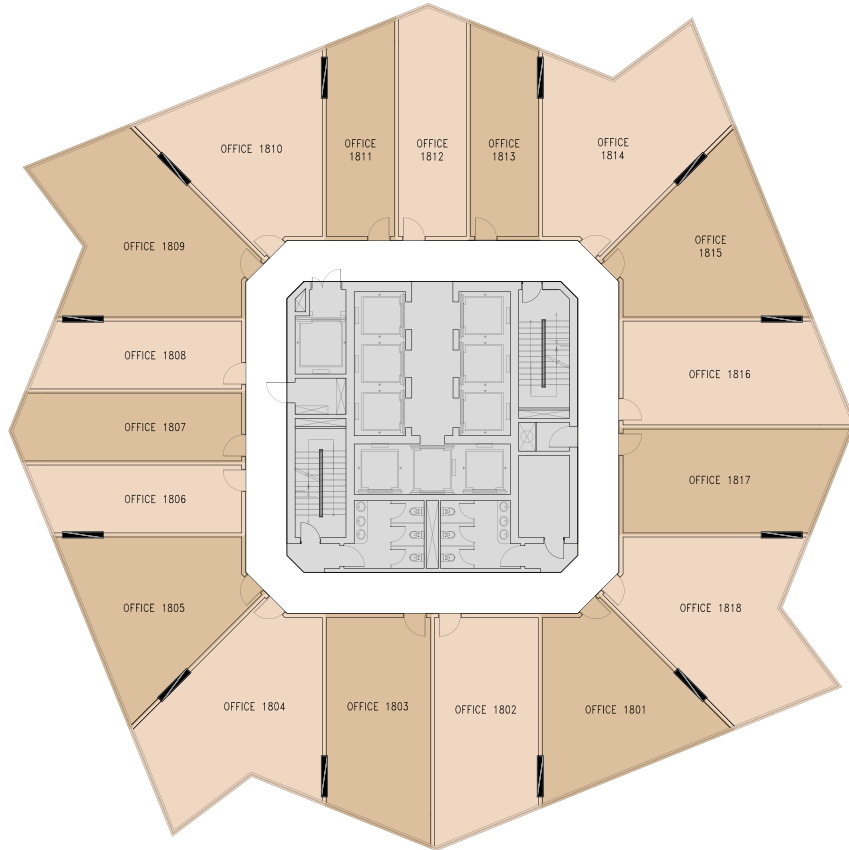


Office No.	GROSS AREA (m2)
1701	82.56
1702	85.35
1703	79.57
1704	106.47
1705	82.56
1706	53.18
1707	54.77
1708	49.13
1709	101.6
1710	78.61
1711	52.07
1712	53.62
1713	48.1
1714	101.6
1715	79.71
1716	82.41
1717	79.53
1718	106.57
Total	1377.41

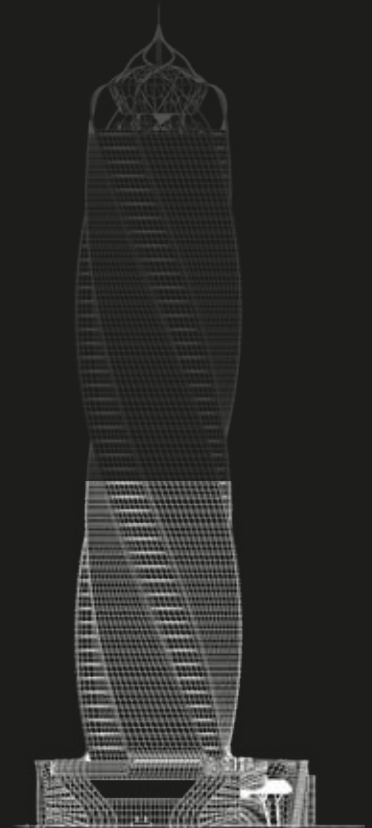


Level 18

Administrative Floor

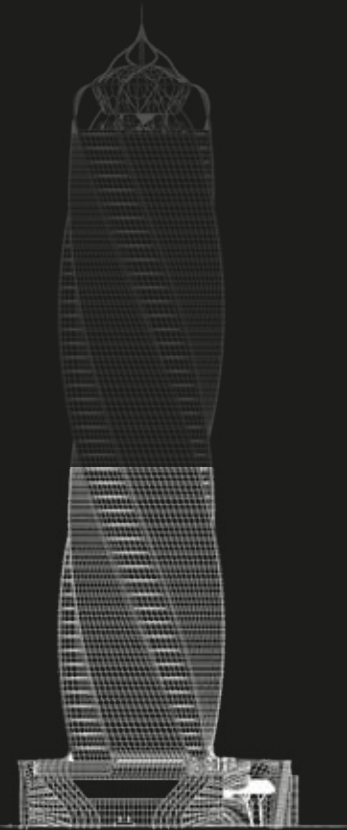


Office No.	GROSS AREA (m2)
1801	85.35
1802	83.07
1803	81.98
1804	103.46
1805	85.25
1806	51.04
1807	55.94
1808	50.31
1809	98.63
1810	81.27
1811	49.97
1812	54.77
1813	49.25
1814	98.73
1815	82.51
1816	80.4
1817	81.92
1818	103.56
Total	1377.41

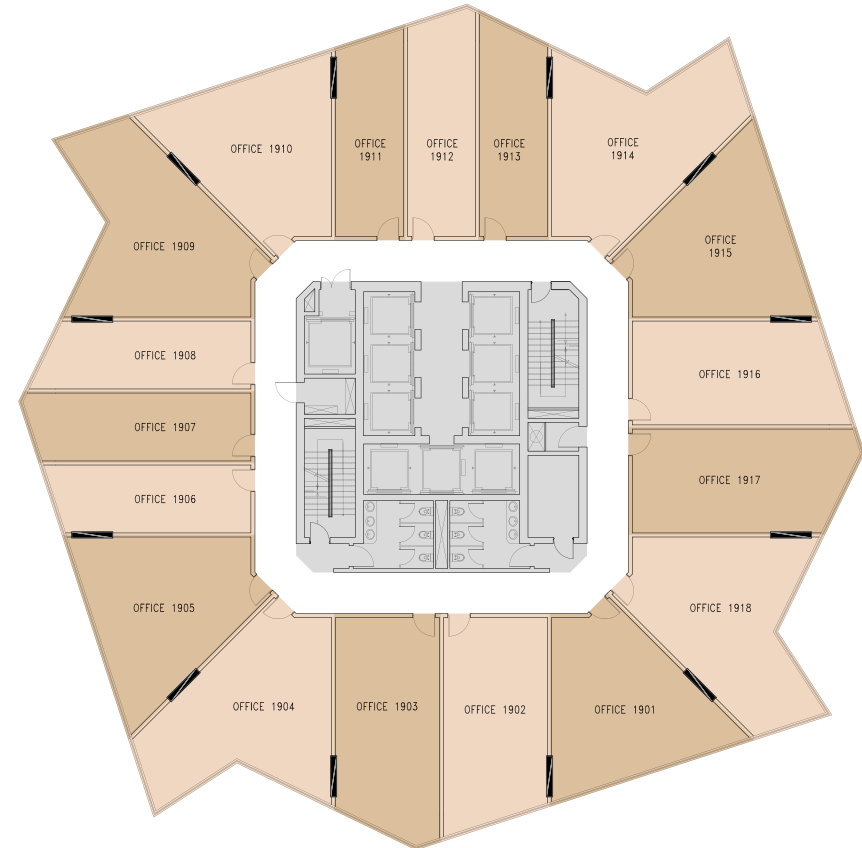


Level 19

Administrative Floor

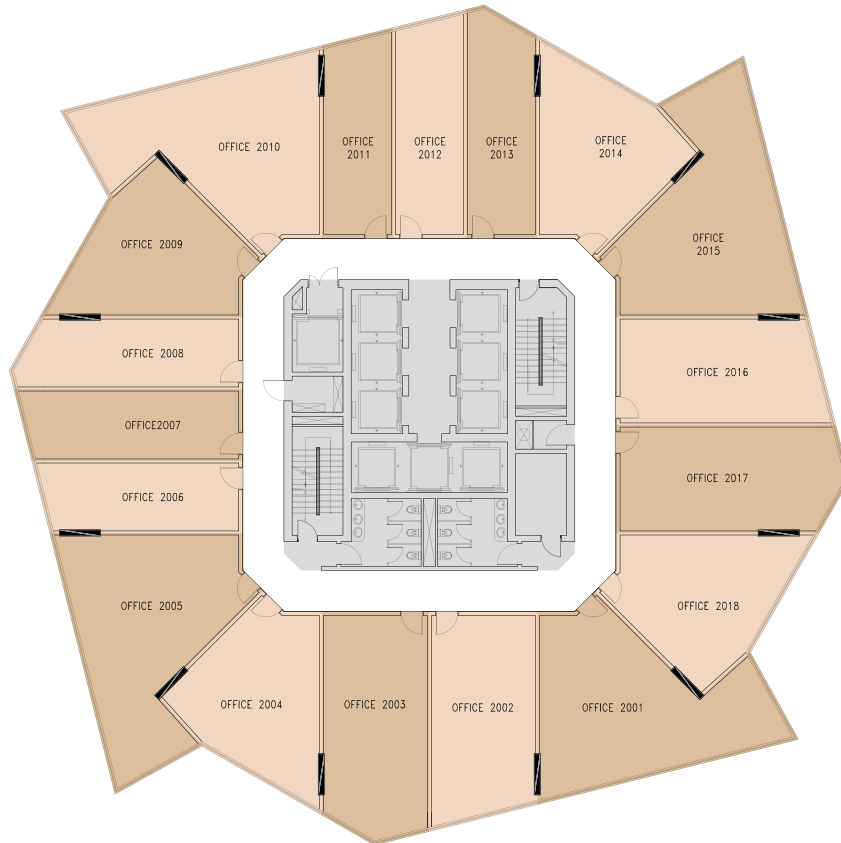


Office No.	GROSS AREA (m2)
1901	89.44
1902	80.74
1903	84.43
1904	99.49
1905	89.35
1906	49.83
1907	55.37
1908	52.07
1909	94.75
1910	85.18
1911	48.78
1912	54.21
1913	50.98
1914	94.75
1915	86.37
1916	77.95
1917	84.33
1918	99.39
Total	1377.41



Level 20

Administrative Floor



Office No.	GROSS AREA (m2)
2001	112.21
2002	79.13
2003	85.37
2004	77.26
2005	95.28
2006	49.15
2007	53.52
2008	53.99
2009	89.71
2010	90.83
2011	48.12
2012	52.39
2013	52.85
2014	89.71
2015	92.1
2016	76.42
2017	85.27
2018	94.1
Total	1377.41

